



HRL Series

HRL12110W Datasheet

12V Top Terminal VRLA-AGM

Specifications

Voltage (Vdc)	12
Watts Per Cell (30-Sec 1.67 VPC @ 25°C)	--
Watts Per Cell (5-Min 1.67 VPC @ 25°)	211
Watts Per Cell (15-Min 1.67 VPC @ 25°)	111
Max Charge Current (A)	11.0
Max Discharge Current (A)	225
Short Circuit Current (A)	884
Internal Resistance (mΩ)	Approx. 8.10
Terminal Type	I1 thread lead alloy terminal to accept M5 bolt
Terminal Torque	30.4±6.1 Kgf·cm / 26.4±5.3 Lbf·in / 3.0±0.6 N·m
Container Material	ABS (UL 94-HB) & Flame Retardant (94-V0) available upon request
Weight (kg. / lb., Approx.)	9.90 / 21.82
Length (L) (mm / in)	166.0±2.0 / 6.54±0.08
Width (W) (mm / in)	125.0±1.5 / 4.92±0.06
Height (H) (mm / in)	175.0±2.0 / 6.89±0.08
Design Life	Up to 10 Years in Standby Service at 25°C. Eurobat (20°C): >12 Years Very Long Life
Operating Temperature	Nominal: 25°C (77°F) Discharge: -15°C - 50°C (5°F-122°F) Charge/Storage: -15°C - 40°C (5°F - 104°F)
Float Charging Voltage	13.5 - 13.8 Vdc/battery 25°C (77°F)
Eq. Charging Voltage	14.4 - 15.0 Vdc/battery 25°C (77°F)
Self-Discharge	Less than 10% after 90 days, can be stored up to 6 months at 25°C (77°F); Fully recharging is required before usage, and charged sooner if stored at higher temperature than 25°C (77°F).



Valve Regulated Lead Acid (VRLA) Battery

Maintenance-Free, Absorbent Glass Mat (AGM) Technology for Efficient Gas Recombination of up to 99%

Pure Lead Construction and Proprietary Elements

Designed for High-Rate UPS, Float Service Standby Power Applications

Built in Accordance with IEC 61056-1/2:2012, UL1973 Listed (MH66728) and UL1989 Recognized (MH14533)

Certified by TUV NORD according to ISO 9001:2015





HRL Series

HRL12110W Datasheet

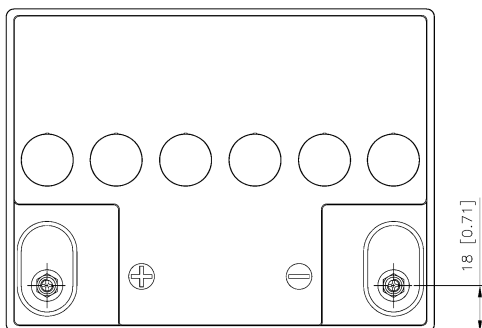
12V Top Terminal VRLA-AGM

Constant Current Discharge Characteristics Per Battery: Amperes (25°C, 77°F)

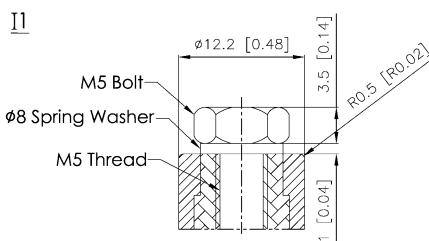
F.V/Time	2MIN	4MIN	5MIN	6MIN	8MIN	10MIN	15MIN	20MIN	30MIN	45MIN	60MIN	90MIN
10.02V (1.67 VPC)	151	129	117	108	91.1	77.5	59.6	47.0	33.2	25.3	20.8	14.7
10.50V (1.75 VPC)	125	108	100	93.2	82.7	72.2	56.1	44.7	32.3	24.4	20.0	14.4
10.80V (1.80 VPC)	109	94.0	88.2	83.7	76.4	68.7	53.7	42.5	31.9	24.0	19.6	14.2

Constant Power Discharge Characteristics Per Battery: Watts (25°C, 77°F)

F.V/Time	2MIN	4MIN	5MIN	6MIN	8MIN	10MIN	15MIN	20MIN	30MIN	45MIN	60MIN	90MIN
10.02V (1.67 VPC)	1624	1386	1263	1171	988	852	665	535	377	292	243	173
10.50V (1.75 VPC)	1358	1190	1093	1020	900	796	636	510	361	280	234	170
10.80V (1.80 VPC)	1177	1054	990	941	851	764	610	495	352	274	229	168



Detail A Drawing(4:1)



[M5 Bolt & M5 Thread & Spring Washer]

